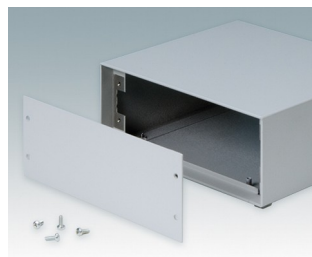
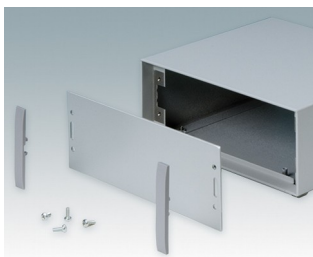
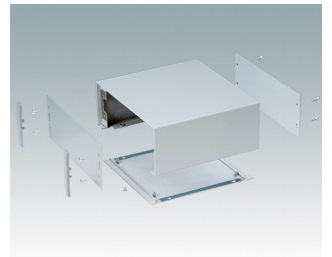
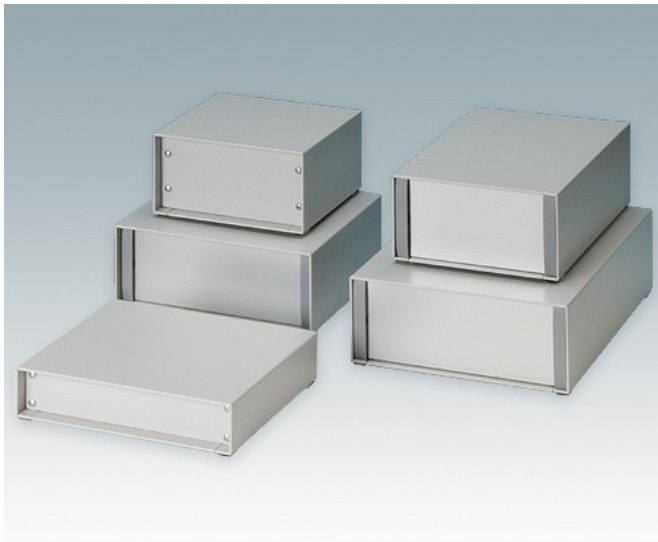


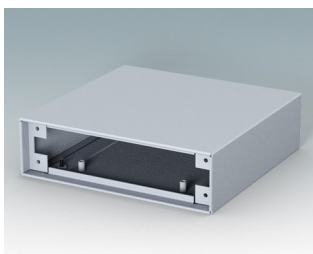
## For small desktop and portable electronics

- Compact aluminium instrument enclosures in eight standard sizes
- Stylish, lightweight and versatile design, simple and fast assembly technique
- Removable base panel pre-fitted with four M3 PCB screw pillars
- Accessories: anodised front/rear panels and painted front/rear panels
- Front panels are recessed by 8 mm or 14 mm
- Four self-adhesive non-slip feet included.

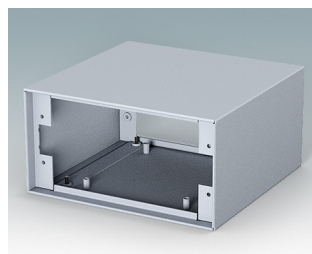
Order your own fully customised version [learn more here >>](#)



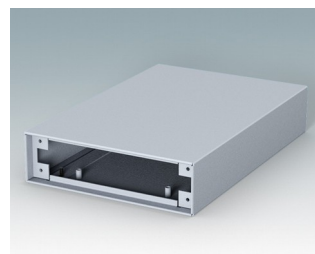
### Select Versions



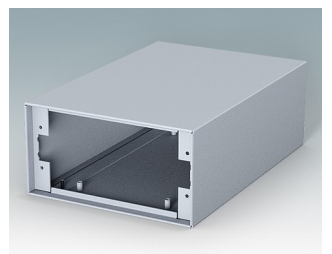
**M5113115**  
MINIMET 1  
Aluminium  
Light grey RAL 7035  
134.5x130x38.5mm



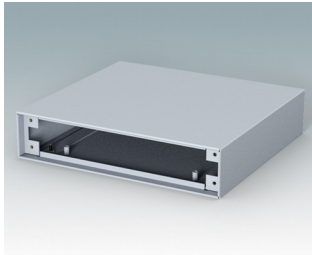
**M5113125**  
MINIMET 2  
Aluminium  
Light grey RAL 7035  
134.5x130x70mm



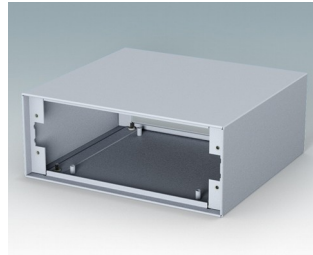
**M5113215**  
MINIMET 3  
Aluminium  
Light grey RAL 7035  
134.5x200x38.5mm



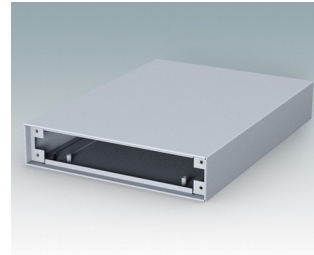
**M5113225**  
MINIMET 4  
Aluminium  
Light grey RAL 7035  
134.5x200x70mm



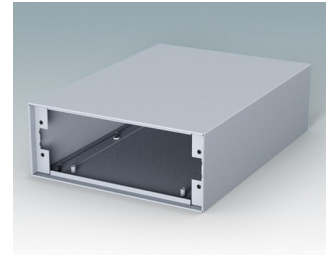
**M5117115**  
MINIMET 5  
Aluminium  
Light grey RAL 7035  
174.5x160x38.5mm



**M5117125**  
MINIMET 6  
Aluminium  
Light grey RAL 7035  
174.5x160x70mm

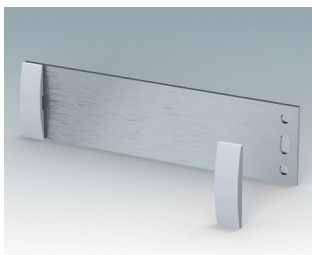


**M5117215**  
MINIMET 7  
Aluminium  
Light grey RAL 7035  
174.5x240x38.5mm

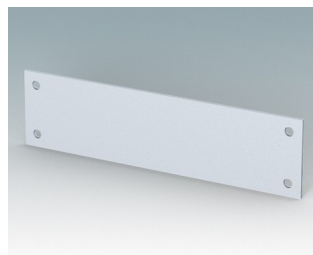


**M5117225**  
MINIMET 8  
Aluminium  
Light grey RAL 7035  
174.5x240x70mm

## Accessory



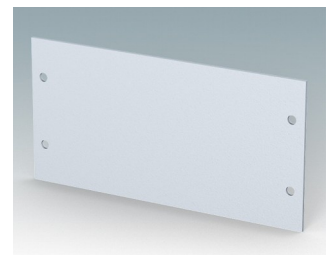
**M5100510**  
Front/rear panel AN (size 1 & 3)  
Aluminium  
Matt anodised  
129.5x2x33.6mm



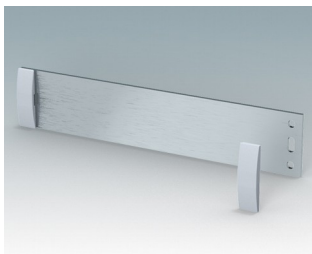
**M5100515**  
Front/rear panel PN (size 1 & 3)  
Aluminium  
Light grey RAL 7035  
129.5x1.5x33.6mm



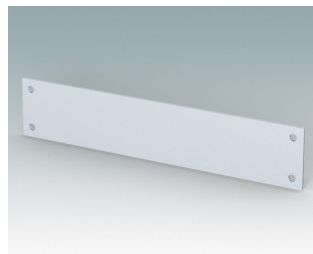
**M5100520**  
Front/rear panel kit AN (size 2 & 4)  
Aluminium  
Matt anodised  
129.5x2x65.1mm



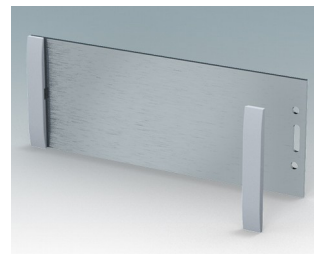
**M5100525**  
Front/rear panel PN (size 2 & 4)  
Aluminium  
Light grey RAL 7035  
129.5x1.5x65.1mm



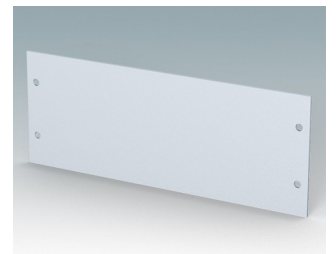
**M5100550**  
Front/rear panel kit AN (size 5 & 7)  
Aluminium  
Matt anodised  
169.5x2x33.6mm



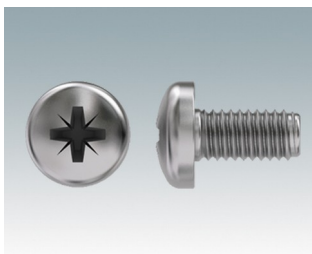
**M5100555**  
Front/rear panel PN (size 5 & 7)  
Aluminium  
Light grey RAL 7035  
169.5x1.5x33.6mm



**M5100560**  
Front/rear panel kit AN (size 6 & 8)  
Aluminium  
Matt anodised  
169.5x2x65.1mm



**M5100565**  
Front/rear panel PN (size 6 & 8)  
Aluminium  
Light grey RAL 7035  
169.5x1.5x65.1mm



**M5600010**  
PCB/Panel Fixing Screws, M3  
Steel  
Zinc coated  
6mm