

SIEMENS KTP/TP/MTP MODELS COMPATIBILITY DATASHEET

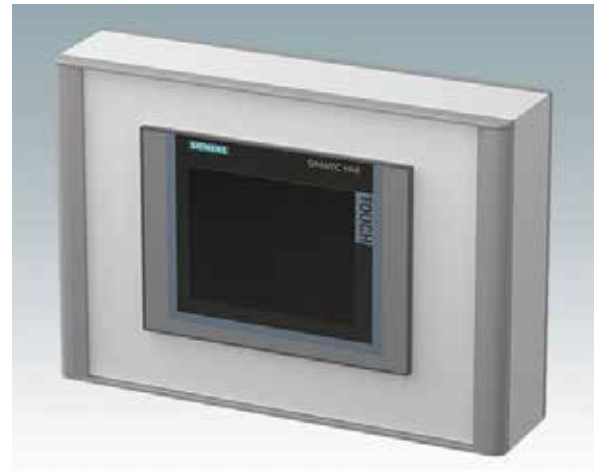
Product Overview:

Product Name: Siemens TP Series HMI Touch Panels
Enclosure Compatibility: TECHNOMET-CONTROL

These enclosures fit the Siemens models:

- KTP400, MTP400
- TP700, MTP700
- TP900
- MTP1000
- TP1200, MTP1200.

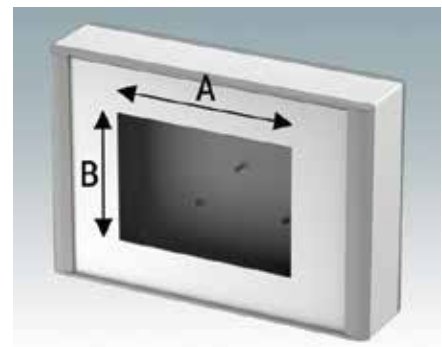
This table identifies which size Siemens display fits into each TECHNOMET-CONTROL enclosure.



Part Number	Enclosure Size (W x H x D)	Enclosure Model	Compatible Siemens Model
M70 23 002	230 x 180 x 95 mm	C218V	KTP400, MTP400
M70 23 006	230 x 180 x 95 mm	C218V	KTP400, MTP400
M70 36 102	360 x 250 x 95 mm	C325V	TP700, MTP700, TP900, MTP1000
M70 36 106	360 x 250 x 95 mm	C325V	TP700, MTP700, TP900, MTP1000
M70 36 402	360 x 360 x 95 mm	C336V	TP700, MTP700, TP900, MTP1000
M70 36 406	360 x 360 x 95 mm	C336V	TP700, MTP700, TP900, MTP1000
M70 42 202	420 x 300 x 95 mm	C430V	TP900, MTP1000, TP1200, MTP1200
M70 42 206	420 x 300 x 95 mm	C430V	TP900, MTP1000, TP1200, MTP1200

TECHNOMET-CONTROL front panel punching details for fitting Siemens KTP/TP/MTP displays.

Siemens Model	Enclosure Model	A (mm)	B (mm)
KTP400/MTP400	C218V	123	99
TP700/MTP700	C325V, C336V	197	141
TP900	C325V, C336V	251	166
MTP1000	C325V, C336V	264	189
TP1200/MTP1200	C430V	310	221



Customising Options:

We can supply the front panels pre-punched with the required apertures for the displays as detailed above. Plus, additional cutouts for buttons and other controls, and digital printing of legends and logos. TECHNOMET-CONTROL enclosures can be customised to any height, width or depth.

Enclosure mounting options:

VESA mounting | wall mounting | pole mounting.