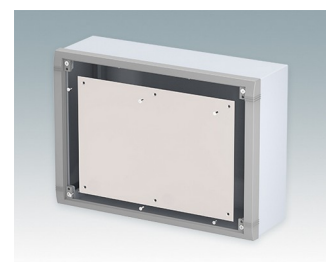
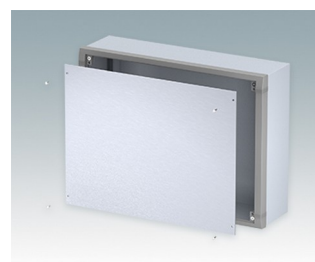
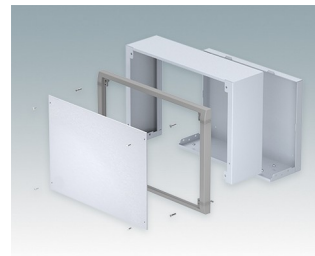


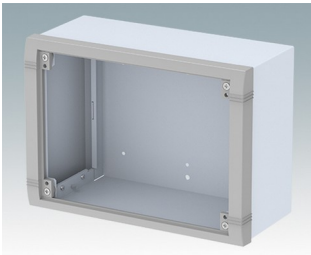
Wall mount enclosures for indoor electronic instruments, controls and HMI

- Very modern design in three standard sizes
- Total access to the electronics during installation and servicing
- Rear section includes holes for fitting PCBs and internal mounting plates
- Cable glands and connectors can be mounted to the underside of the rear section
- Top section fits over the rear panel and also secures the front bezel
- Die cast front bezel provides a modern look to the cases
- Front panels recessed in the bezel to protect controls
- Pre-punched wall mounting points in the rear panel
- Four M4 earth studs provided inside
- Two standard colour combinations grey or black
- All fixings supplied with case
- Accessory anodised aluminium front panels
- Accessory internal mounting plate kit and PCB screw pillars.

Order your own fully customised version [learn more here >>](#)



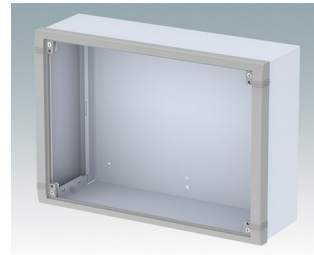
Select Versions



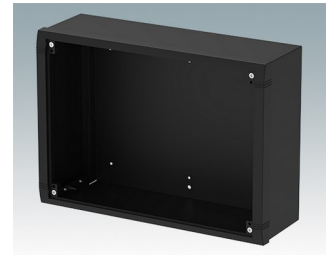
M5825105
Datamet S
Aluminium
Light grey/window grey RAL
7035/7040
250x180x116.5mm



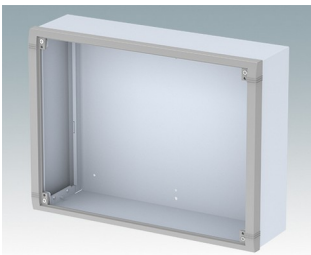
M5825109
Datamet S
Aluminium
Black RAL 9005
250x180x116.5mm



M5835105
Datamet M
Aluminium
Light grey/window grey RAL
7035/7040
350x250x116.5mm



M5835109
Datamet M
Aluminium
Black RAL 9005
350x250x116.5mm

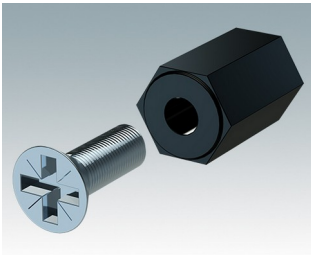


M5840105
Datamet L
Aluminium
Light grey/window grey RAL
7035/7040
400x300x116.5mm

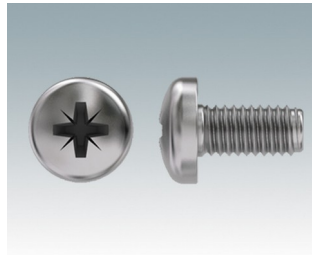


M5840109
Datamet L
Aluminium
Black RAL 9005
400x300x116.5mm

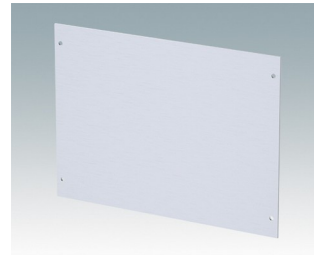
Accessory



M5600001
PCB mounting kit
PA 6
Black RAL 9005



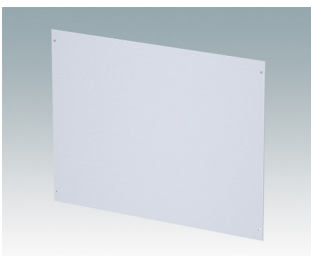
M5600010
PCB/Panel Fixing Screws, M3
Steel
Zinc coated
6mm



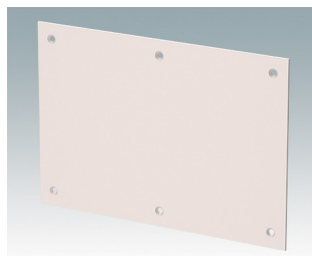
M5800025
Front panel S
Aluminium
Matt anodised
220x2x159.5mm



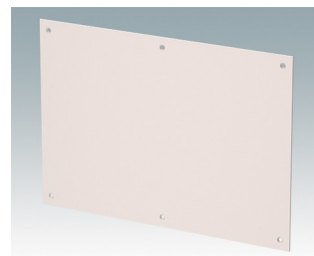
M5800035
Front panel M
Aluminium
Matt anodised
320x2x229.5mm



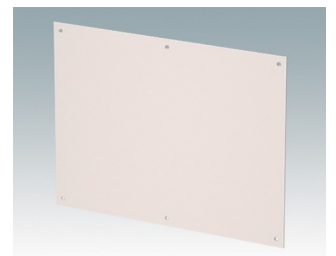
M5800040
Front panel L
Aluminium
Matt anodised
370x2x279.5mm



M5804125
Mounting plate kit S
Aluminium
Natural finish
175x120x1.5mm



M5804135
Mounting plate kit M
Aluminium
Natural finish
275x190x1.5mm



M5804140
Mounting plate kit L
Aluminium
Natural finish
325x240x1.5mm

