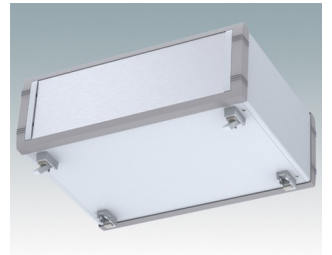
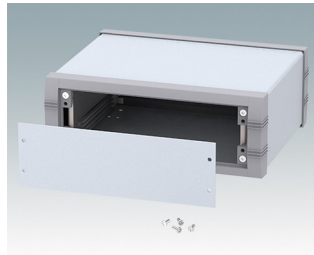
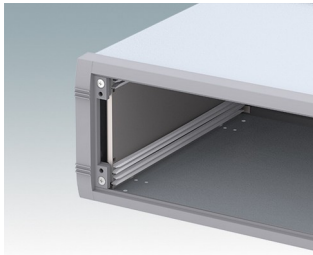
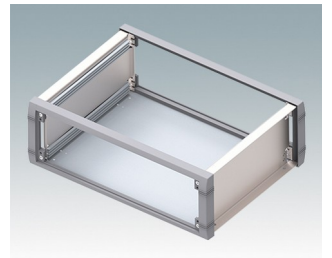
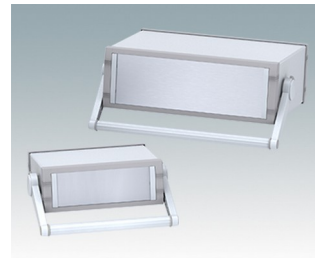
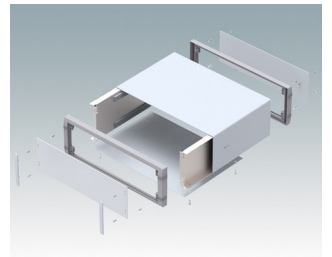
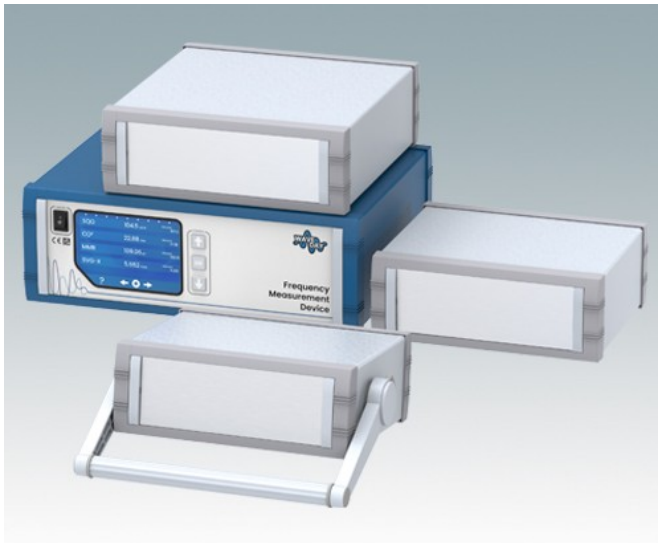


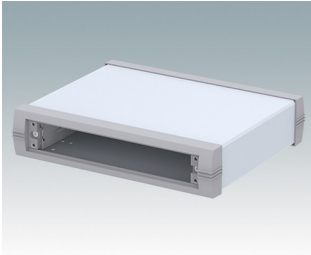
## Stylish and versatile instrument enclosures

- Advanced aluminium instrument enclosures with or without a tilt/swivel carry handle
- Robust and versatile design in six sizes
- Internal chassis with horizontal guide positions for slide-in PCBs
- Four snap-in polyamide PCB guides included
- Stylish die cast front and rear bezels assembled to the folded aluminium case body
- Removable rear panel - recessed for protection of connectors, switches etc.
- Recessed aluminium front panel (accessory)
- Four non-slip rubber feet included
- Accessory moulded tilt feet available.

Order your own fully customised version [learn more here >>](#)



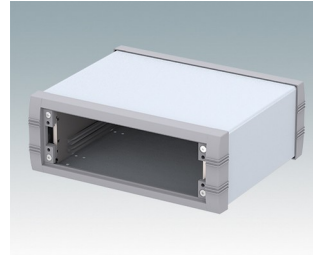
## Select Versions



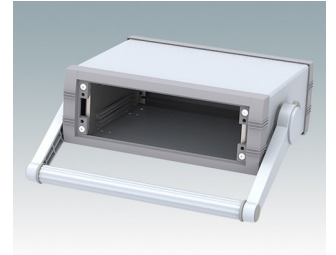
**M5623015**  
UNIMET-PLUS 1  
Aluminium  
Light grey/window grey RAL  
7035/7040  
230x193x50mm



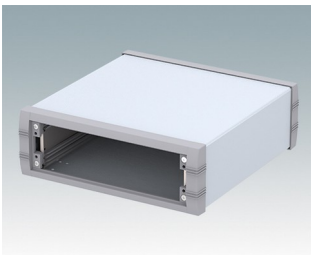
**M5623035**  
UNIMET-PLUS 1H  
Aluminium  
Light grey/window grey RAL  
7035/7040  
230x193x50mm



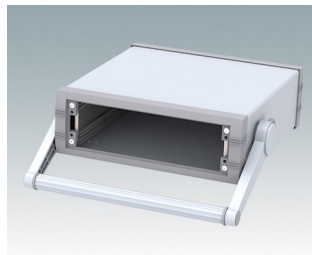
**M5623115**  
UNIMET-PLUS 2  
Aluminium  
Light grey/window grey RAL  
7035/7040  
230x193x85mm



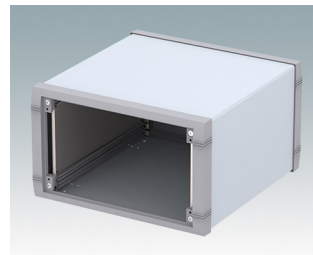
**M5623135**  
UNIMET-PLUS 2H  
Aluminium  
Light grey/window grey RAL  
7035/7040  
230x193x85mm



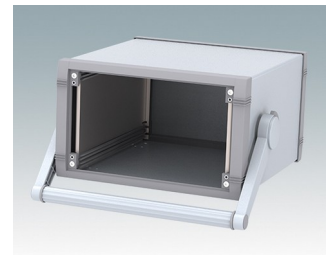
**M5625115**  
UNIMET-PLUS 3  
Aluminium  
Light grey/window grey RAL  
7035/7040  
250x263x85mm



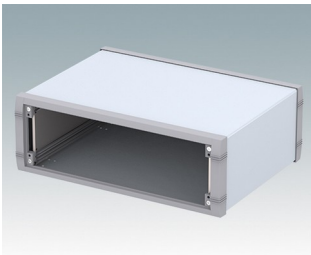
**M5625135**  
UNIMET-PLUS 3H  
Aluminium  
Light grey/window grey RAL  
7035/7040  
250x263x85mm



**M5625315**  
UNIMET-PLUS 5  
Aluminium  
Light grey/window grey RAL  
7035/7040  
250x263x150mm



**M5625335**  
UNIMET-PLUS 5H  
Aluminium  
Light grey/window grey RAL  
7035/7040  
250x263x150mm



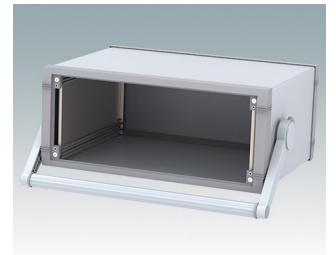
**M5635215**  
UNIMET-PLUS 4  
Aluminium  
Light grey/window grey RAL  
7035/7040  
350x263x120mm



**M5635235**  
UNIMET-PLUS 4H  
Aluminium  
Light grey/window grey RAL  
7035/7040  
350x263x120mm

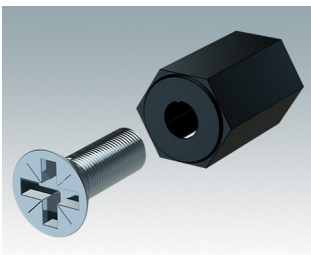


**M5635315**  
UNIMET-PLUS 6  
Aluminium  
Light grey/window grey RAL  
7035/7040  
350x263x150mm

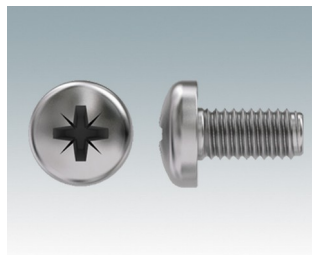


**M5635335**  
UNIMET-PLUS 6H  
Aluminium  
Light grey/window grey RAL  
7035/7040  
350x263x150mm

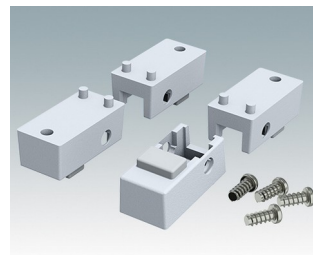
## Accessory



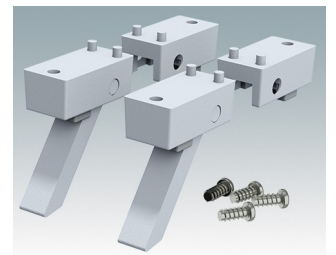
**M5600001**  
PCB mounting kit  
PA 6  
Black RAL 9005



**M5600010**  
PCB/Panel Fixing Screws, M3  
Steel  
Zinc coated  
6mm



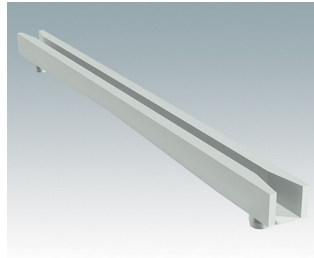
**M5600015**  
Case Feet Kit 1  
ABS (UL 94 HB)  
Light grey RAL 7035  
34x17x16mm



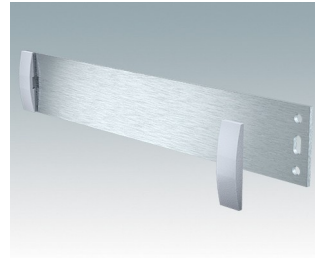
**M5600045**  
Case Feet Kit 2  
ABS (UL 94 HB)  
Light grey RAL 7035  
34x17x16mm



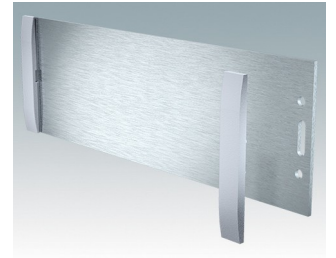
**M5700202**  
PCB guide, 216mm  
PA 6/6 (UL 94 V-2)  
White



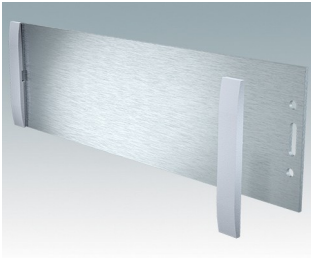
**M5700203**  
PCB guide, 102mm  
PA 6/6 (UL 94 V-2)  
White



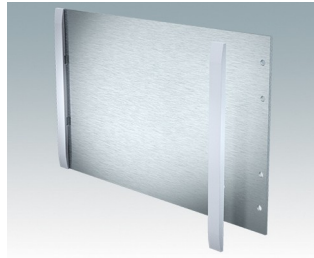
**M5700607**  
Front panel kit (1/1H)  
Aluminium  
Matt anodised  
199.5x2x33.6mm



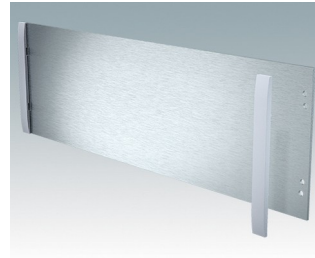
**M5700608**  
Front panel kit (2/2H)  
Aluminium  
Matt anodised  
199.5x2x65.1mm



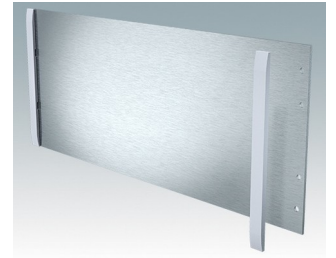
**M5700613**  
Front panel kit (3/3H)  
Aluminium  
Matt anodised  
219.5x2x65.1mm



**M5700616**  
Front panel kit (5/5H)  
Aluminium  
Matt anodised  
219.5x2x130.1mm



**M5700620**  
Front panel kit (4/4H)  
Aluminium  
Matt anodised  
319.5x2x100.1mm



**M5700621**  
Front panel kit (6/6H)  
Aluminium  
Matt anodised  
319.5x2x130.1mm

Subject to technical modification without notice. © OKW Enclosures Ltd