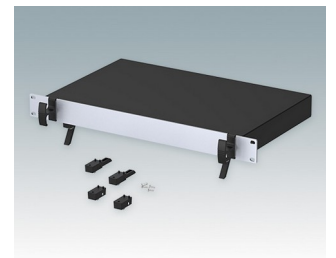
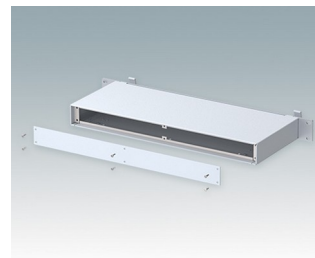
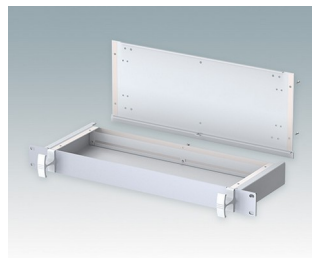
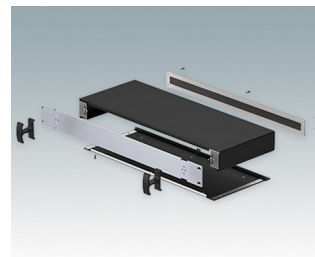
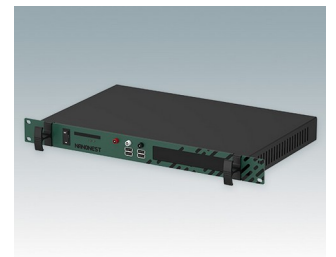
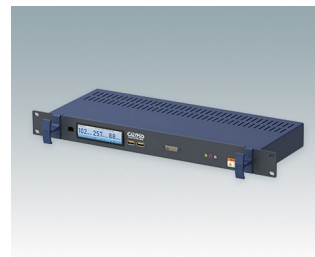
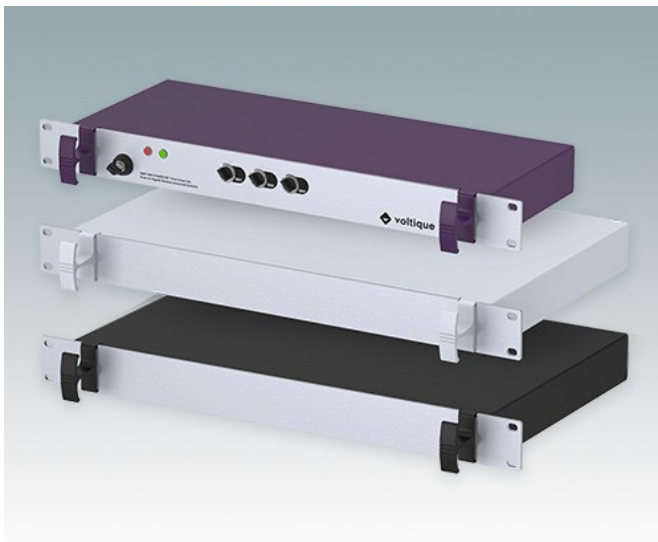


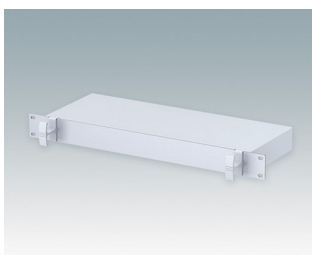
## Versatile 1U rack mount enclosures to DIN 41494 and IEC 60297-3

- Modern aluminium 19" rack mount cases in two standard colours, grey or black
- Attractive design incorporating unique 'comfort-handles'
- Robust folded case body with removable base panel
- Removable rear panel
- Anodised aluminium 1U x 19" front panel
- Mounting holes in base for PCBs
- Optional moulded feet can be fitted for desktop use
- Accessory PCB mounting pillars
- Cases supplied fully assembled.

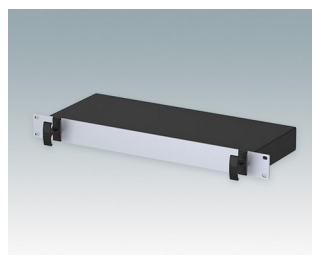
Order your own fully customised version [learn more here >>](#)



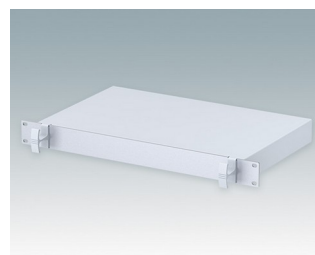
### Select Versions



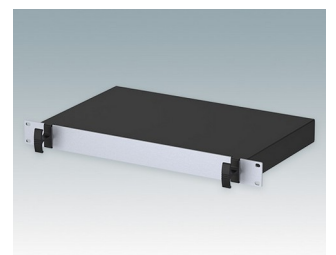
**M4919115**  
VERSAMET 19" 1Ux165mm  
Aluminium  
Light grey RAL 7035  
44x483x165mm



**M4919119**  
VERSAMET 19" 1Ux165mm  
Aluminium  
Black RAL 9005  
44x483x165mm

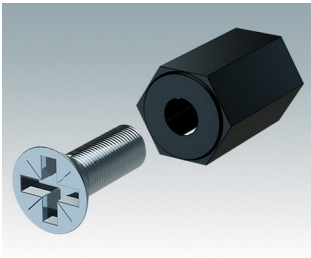


**M4919125**  
VERSAMET 19" 1Ux265mm  
Aluminium  
Light grey RAL 7035  
44x483x265mm

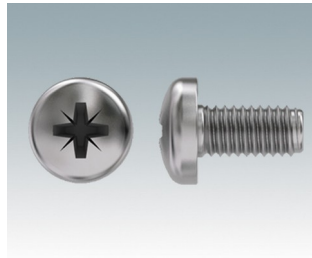


**M4919129**  
VERSAMET 19" 1Ux265mm  
Aluminium  
Black RAL 9005  
44x483x265mm

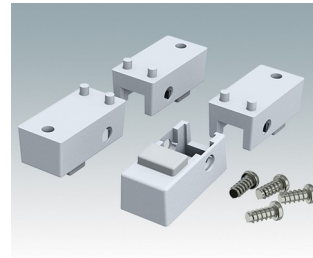
## Accessory



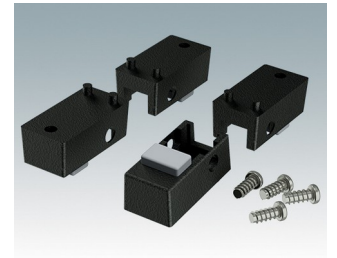
**M5600001**  
PCB mounting kit  
PA 6  
Black RAL 9005



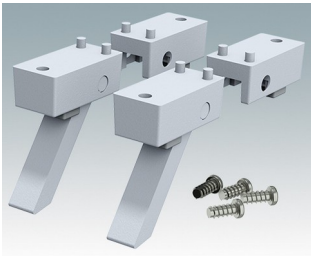
**M5600010**  
PCB/Panel Fixing Screws, M3  
Steel  
Zinc coated  
6mm



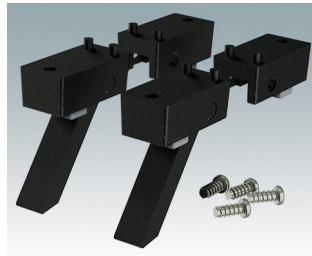
**M5600015**  
Case Feet Kit 1  
ABS (UL 94 HB)  
Light grey RAL 7035  
34x17x16mm



**M5600019**  
Case Feet Kit 1  
ABS (UL 94 HB)  
Black RAL 9005  
34x17x16mm



**M5600045**  
Case Feet Kit 2  
ABS (UL 94 HB)  
Light grey RAL 7035  
34x17x16mm



**M5600049**  
Case Feet Kit 2  
ABS (UL 94 HB)  
Black RAL 9005  
34x17x16mm



**M5900016**  
19" mounting kit  
Black RAL 9005



**M6000035**  
19" mounting kit  
Light grey RAL 7035

Subject to technical modification without notice. © OKW Enclosures Ltd