

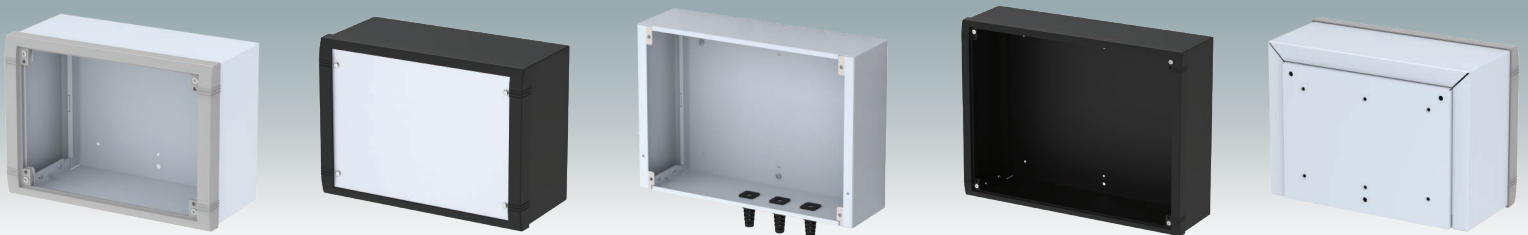
# METcase™

Electronic Enclosures



## DATAMET

Wall-Mount Enclosures



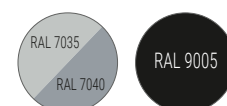


## Versatile, easy-access wall-mount enclosures

DATAMET wall-mount enclosures are designed for indoor electronic equipment mounted on walls, machines or other flat surfaces. The modern three-part design provides full access to the electronics during installation and servicing. The L-shaped rear panel attaches to the wall and includes holes for fitting PCBs or the internal mounting plate kit. Cable glands and connectors can be mounted on the underside. The top cover fits over the rear panel and secures the diecast front bezel. The front panel (accessory) is attached to the diecast bezel using the screws provided. Order your own fully customised version today.

## Standard colours

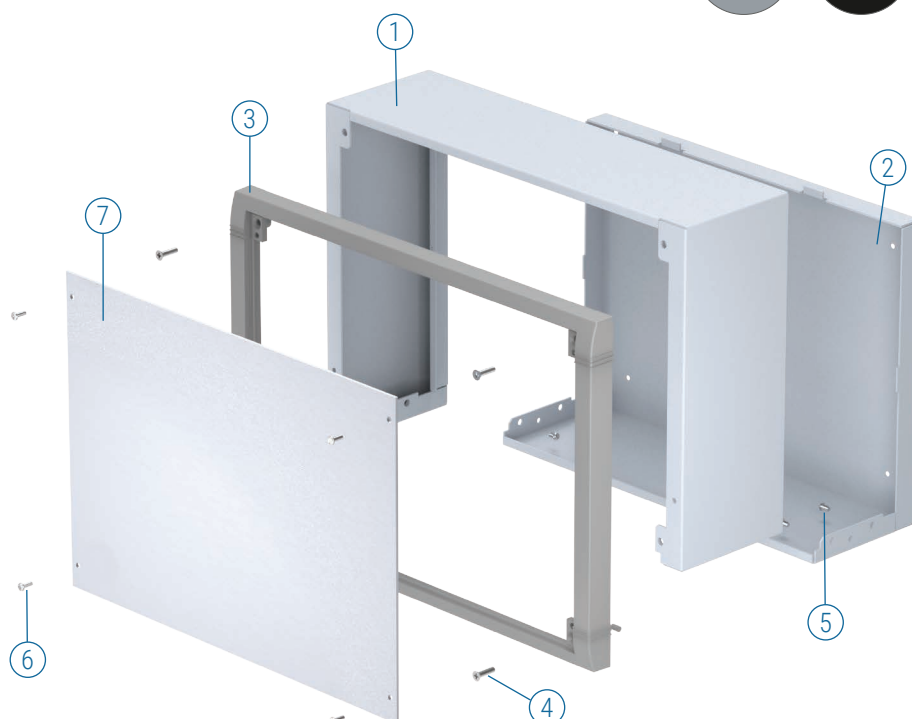
Light grey RAL 7035.  
Window grey RAL 7040.  
Black RAL 9005.



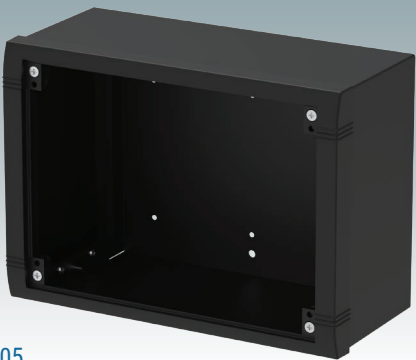
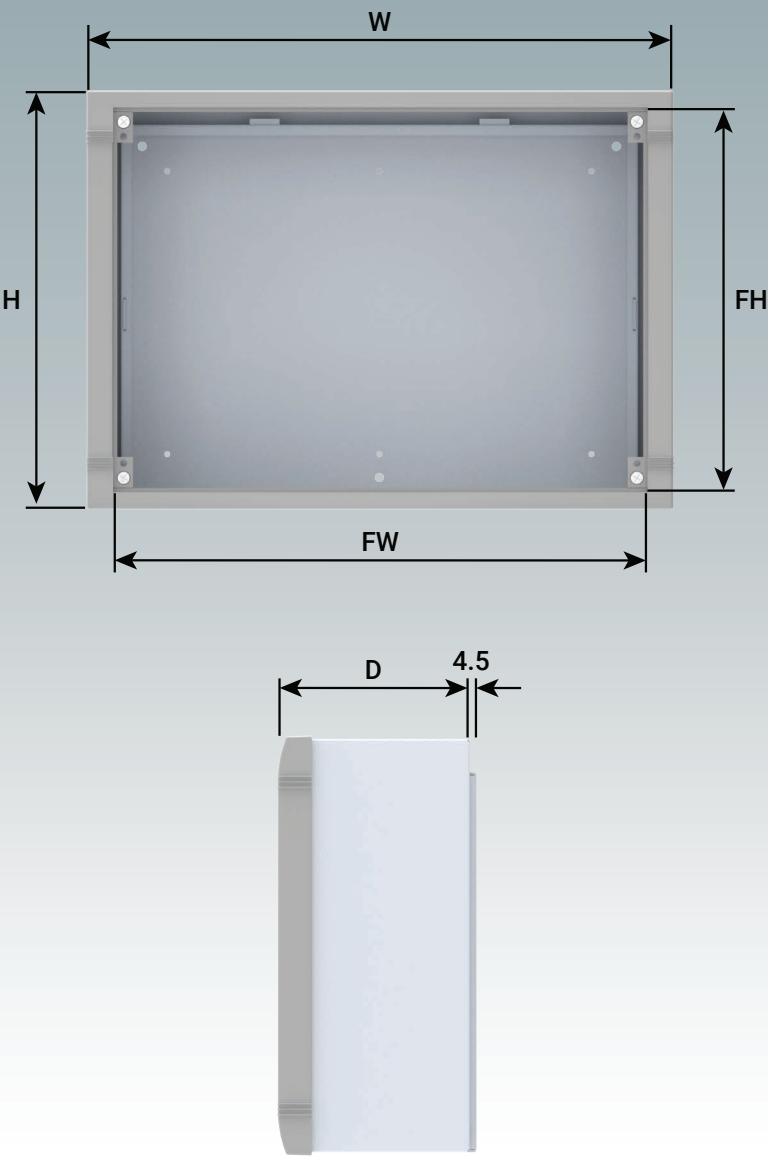
## Supply

- ① Top cover
- ② Rear panel
- ③ Front bezel
- ④ M4 x 16 mm (x4)
- ⑤ M4 x 6 mm (x4)
- ⑥ M3 x 10 mm (x4)
- ⑦ \*Front panel

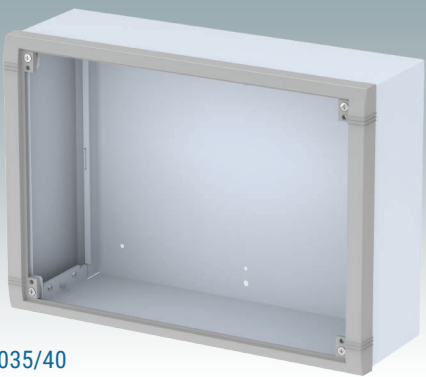
\*accessories



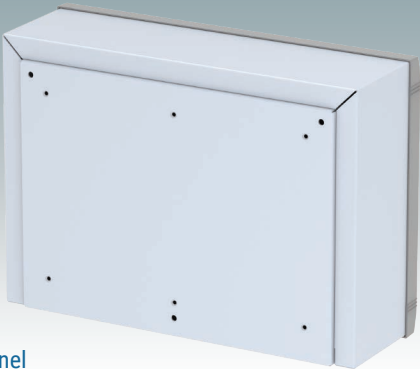
DATAMET



RAL 9005





RAL 7035/40



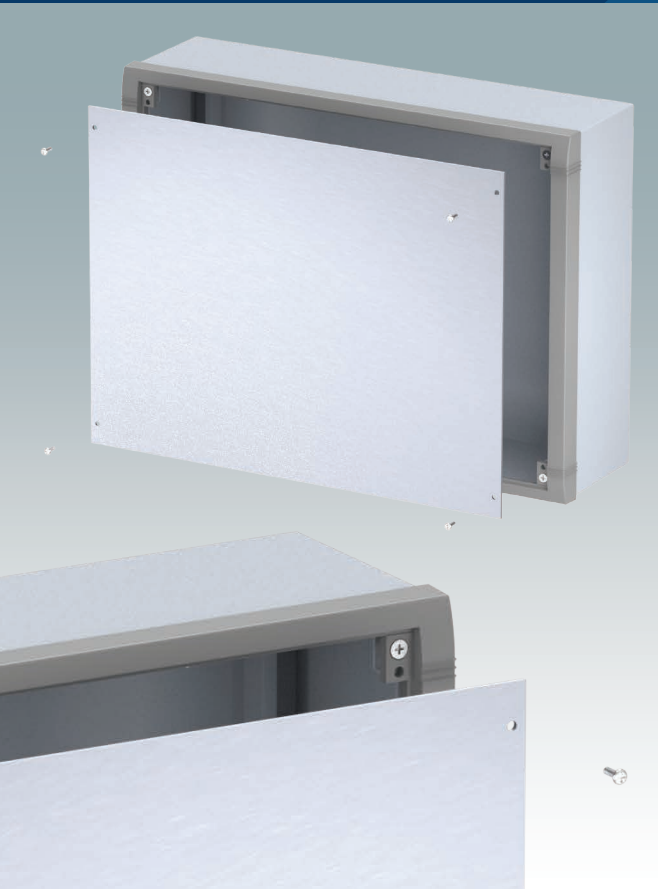
Rear panel

DATAMET

Part No.	Part No.	Version	W	H	D	FW	FH	PCB	PCB
RAL 9005 	RAL 7035/40 					Front Panel	Front Panel	Width (max.)	Depth (max.)
<b>M 58 25 109</b>	<b>M 58 25 105</b>	S	250	180	116.5	220	159.5	175	120
<b>M 58 35 109</b>	<b>M 58 35 105</b>	M	350	250	116.5	320	229.5	275	190
<b>M 58 40 109</b>	<b>M 58 40 105</b>	L	400	300	116.5	370	279.5	325	240

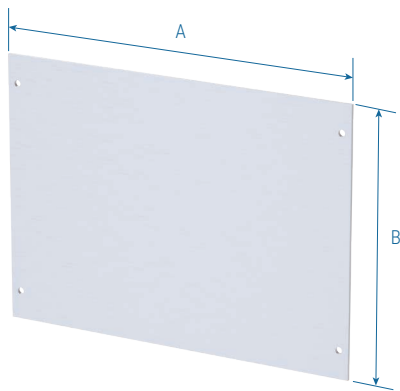
For full 2D drawings and 3D models please see our website.

For front panels and accessories see page 4.

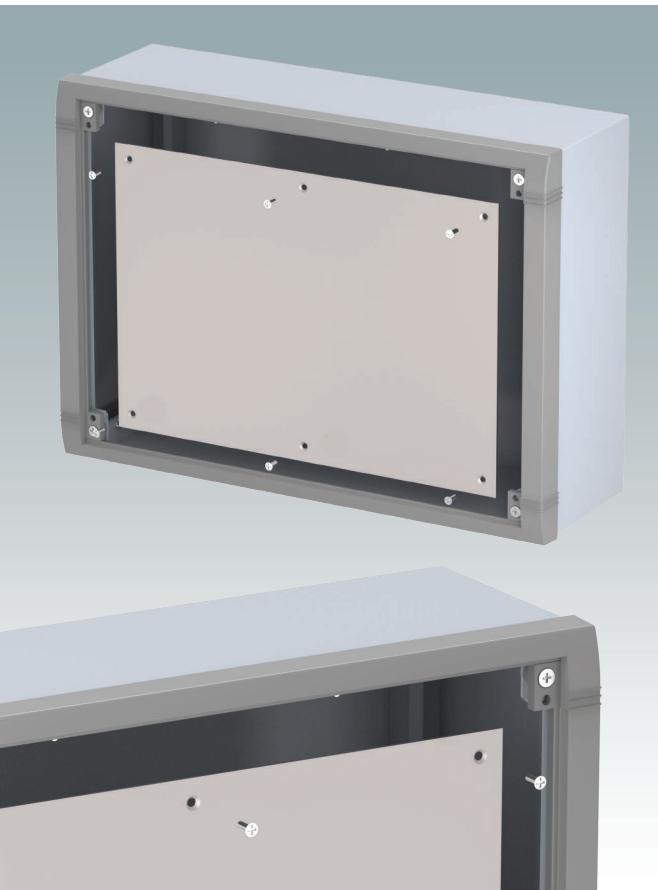


Front Panel

**Supply:**  
Panel (2 mm matt anodised aluminium)



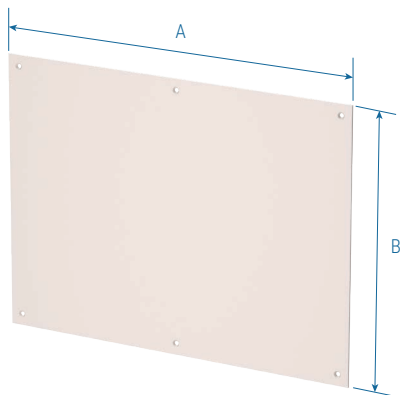
Part No.	Version	A	B
M 58 00 025	S	220	159.5
M 58 00 035	M	320	229.5
M 58 00 040	L	370	279.5



Mounting Plate Kit

The mounting plate is attached to the pre-punched holes in the enclosure's rear panel using the nylon pillars and screws supplied in the kit.

**Supply:**  
Mounting plate (1.5 mm natural aluminium)  
M3 x 10 mm threaded pillar (x6)  
M3 x 6 mm fixing screw (x12)



Part No.	Version	A	B
M 58 04 125	S	175	120
M 58 04 135	M	275	190
M 58 04 140	L	325	240



## Order your own customised version

We can supply the DATAMET enclosures fully customised to your individual technical specifications.

All external dimensions – height, width and depth – can be modified to ensure your PCB assemblies and equipment will fit exactly.

The enclosures and front panels can be machined with holes and cutouts for fitting displays, keypads, HMI touch panels, control buttons and connections.

Other services include adding inserts and screw bosses; custom colours and finishes; digital and silk-screen printing, and engraving.

Having a flexible manufacturing system allows us to offer competitive prices even for small quantities. Do not hesitate to ask us for a quotation.

Our sales team will be very happy to discuss your requirements and help you specify your DATAMET enclosures exactly as you need them.







# METcase™

## MANUFACTURER

Metcase Enclosures  
A division of:  
OKW Enclosures Ltd.  
15 Brunel Way  
Segensworth East  
Fareham, Hampshire  
PO15 5TX  
United Kingdom

Telephone: +44 (0) 1489 583858  
Email: [sales@metcase.co.uk](mailto:sales@metcase.co.uk)  
Website: [www.metcase.co.uk](http://www.metcase.co.uk)

© OKW Enclosures Ltd. All rights reserved  
Catalogue Edition 1.1 – December 2025.  
This catalogue will be valid until 31/12/2027.  
Subject to technical modifications without notice.  
Typographical and other errors do not justify any  
claim for damages.  
Digital Version: 12/2025e

## Presented by:

Find your local sales partner here:



**UNITED KINGDOM | IRELAND**  
OKW ENCLOSURES LTD  
15 Brunel Way,  
Segensworth East,  
Fareham, PO15 5TX  
United Kingdom  
Phone: +44 (0) 1489 583858  
Email: [sales@metcase.co.uk](mailto:sales@metcase.co.uk)  
Website: [www.metcase.co.uk](http://www.metcase.co.uk)



**POLAND**  
LC ELEKTRONIK Sp. z o.o. Sp. k.  
UL. PULKOWA 58,  
01-969 Warszawa  
Phone: +48 (22) 569 53 00  
Email: [lcel@lcel.com.pl](mailto:lcel@lcel.com.pl)  
Website: [www.metcase.co.uk](http://www.metcase.co.uk)



**AUSTRALIA | NEW ZEALAND**  
ROLEC OKW Australia New Zealand PTY LTD  
Unit 6/29 Coombes Drive, Penrith NSW 2750  
Phone: +61 2 4722 3388  
Email: [metcase@rolec-okw.com.au](mailto:metcase@rolec-okw.com.au)  
Website: [www.metcase.com.au](http://www.metcase.com.au)



**ISRAEL**  
P. Weiss  
20 Ha-Ta'as st.  
P.O.B. 50 Kfar Saba, 4442520.  
Phone +972 9 7677500  
Email: [pweiss@pweiss.co.il](mailto:pweiss@pweiss.co.il)  
Website: [www.metcase.co.uk](http://www.metcase.co.uk)



**BELGIUM | LUXEMBOURG**  
Telerex nv  
Uilenbaan 90,  
2160 WOMMELGEM, België  
Tel: +32 3 326 40 00  
Email: [sales-be@telerex-europe.com](mailto:sales-be@telerex-europe.com)  
Website: [www.metcase.co.uk](http://www.metcase.co.uk)



**NETHERLANDS**  
Telerex Nederland B.V.  
Minervum 7139, 4817 ZN BREDA  
Tel: +31 76 578 20 00  
Email: [sales-nl@telerex-europe.com](mailto:sales-nl@telerex-europe.com)  
Website: [www.metcase.co.uk](http://www.metcase.co.uk)



**BRAZIL**  
sob Schurter + OKW do Brasil  
Componentes Eletrônicos Ltda.  
Rua Barão do Triunfo,  
88 - Sala 606 Brooklin,  
São Paulo/SP CEP 04602-000  
Phone: +55 (11) 50 90 00 30  
Email: [info@sob-brasil.com](mailto:info@sob-brasil.com)  
Website: [www.metcase.co.uk](http://www.metcase.co.uk)



**ITALY**  
Alhof di A. Hofmann SPA  
Via Melegnano 20,  
20019 Settimo Milanese MI  
Phone: +39 (02) 28 50 08 1  
Email: [alhof@alhof.com](mailto:alhof@alhof.com)  
Website: [www.metcase.co.uk](http://www.metcase.co.uk)

[www.metcase.co.uk](http://www.metcase.co.uk)