

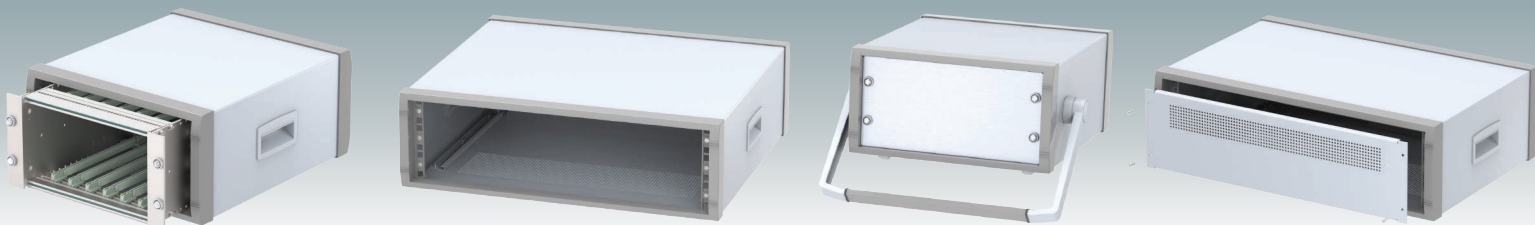
# METcase™

Electronic Enclosures

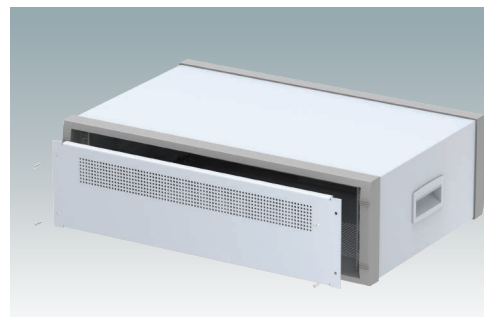
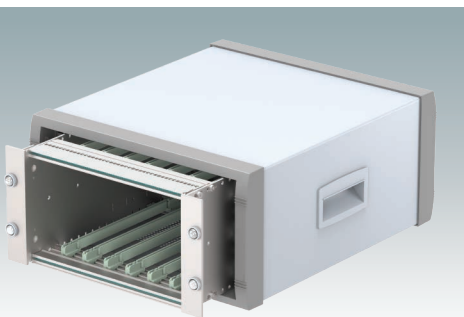


## INSTRUMET 19"

Modern Desktop Mini-Rack  
Enclosures 19"/10.5"  
DIN 41494 | IEC 60297-3



# INSTRUMET 19"

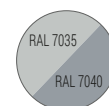


## 19"/10.5" Mini-Rack Enclosures For Electronics Equipment

Modern aluminium 3U rack enclosures are available in full-width 19" (84HP) or half-width 10.5" (42HP) sizes. All versions conform to DIN 41494 and IEC 60297-3 standards. The design is attractive, featuring diecast front and rear bezels, a removable rear panel and a fabricated case body. Two internal chassis rails provide support for the equipment inside. Ventilation holes are included in the base and rear panel. M4 earth studs are fitted to all panels. Four moulded non-slip ABS feet are attached to the base, including two front tilt legs. Choose from two versions: with two side handles or a tilt/swivel carry handle bar. Contact us to discuss your fully customised version.

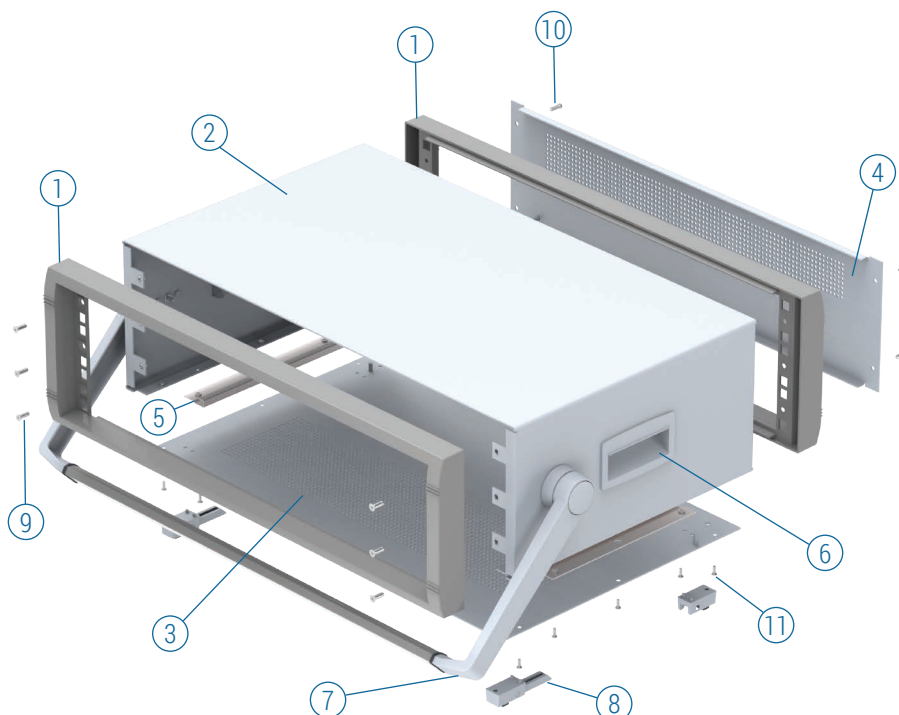
## Standard colours

Light grey RAL 7035  
Window grey RAL 7040

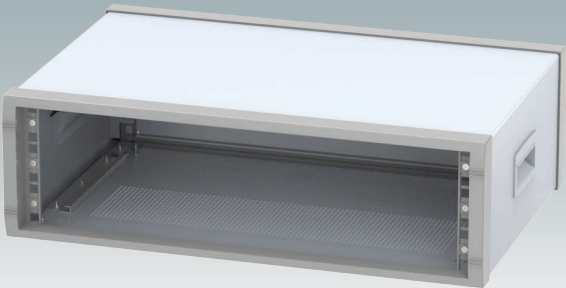
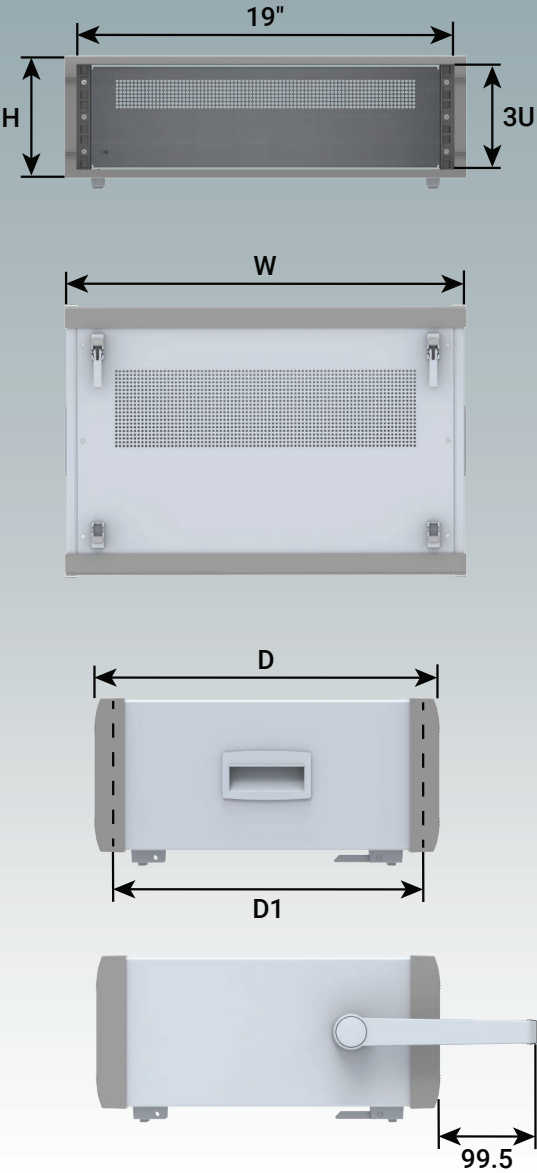


### Supply

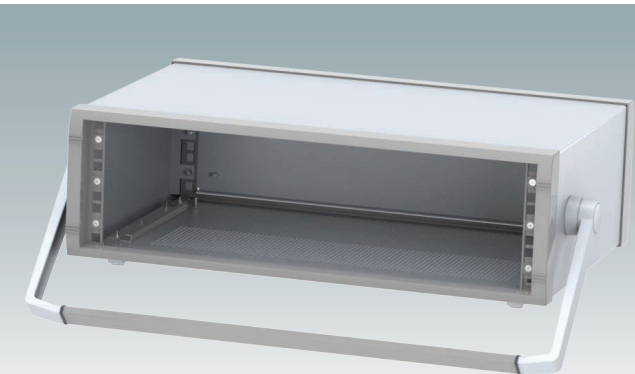
- ① Front/rear bezel (x2)
- ② Top cover
- ③ Base panel
- ④ Rear panel
- ⑤ Chassis support (x2)
- ⑥ ABS side handle (x2)
- ⑦ Tilt/swivel handle
- ⑧ ABS tilt feet
- ⑨ M4 x 10 mm (x8)
- ⑩ M4 x 12 mm (x4)
- ⑪ M3 x 8 mm (x10)



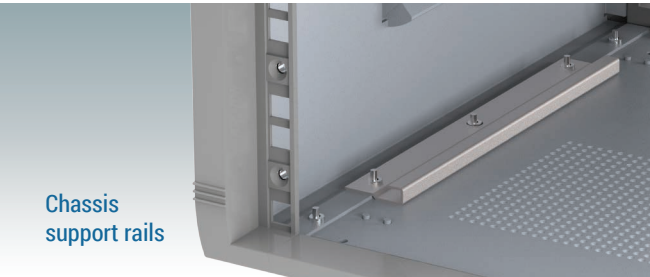
INSTRUMET 19"



With side handles



With carry handle



Chassis support rails

WITH SIDE HANDLES

Part No.	Version	U	H	W	D	D1
M 60 19 305	19"	3U	157.3	516	350	304.5
M 60 19 325	19"	3U	157.3	516	450	404.5

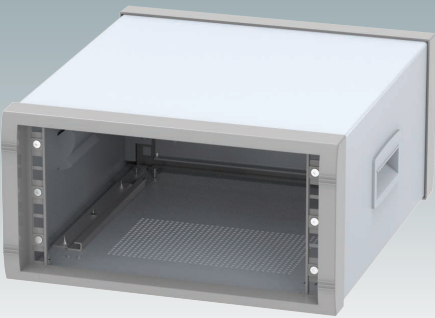
WITH CARRY HANDLE

Part No.	Version	U	H	W	D	D1
M 60 19 315	19"	3U	157.3	516	350	304.5
M 60 19 335	19"	3U	157.3	516	450	404.5

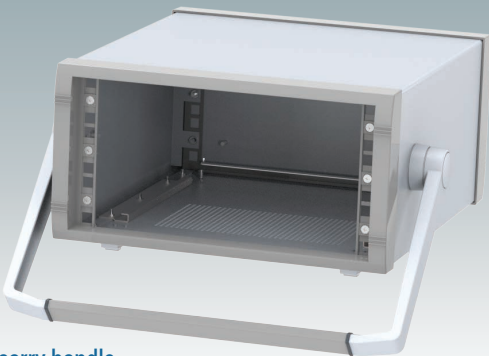
For full 2D drawings and 3D models please see our website.

For front panels and accessories see page 5.

# INSTRUMET 19"



With side handles

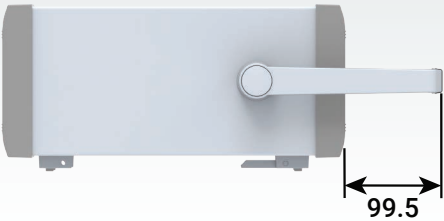
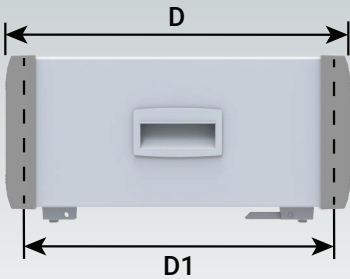
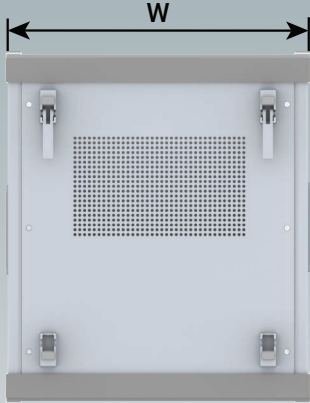
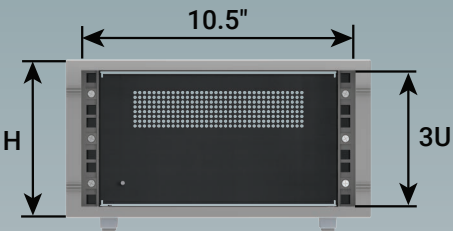


With carry handle



Chassis support rails

## INSTRUMET 10.5"



### WITH SIDE HANDLES

Part No.	Version	U	H	W	D	D1
M 60 10 305	10.5"	3U	157.3	303	350	304.5

### WITH CARRY HANDLE

Part No.	Version	U	H	W	D	D1
M 60 10 315	10.5"	3U	157.3	303	350	304.5

For full 2D drawings and 3D models please see our website.

For front panels and accessories see page 5.

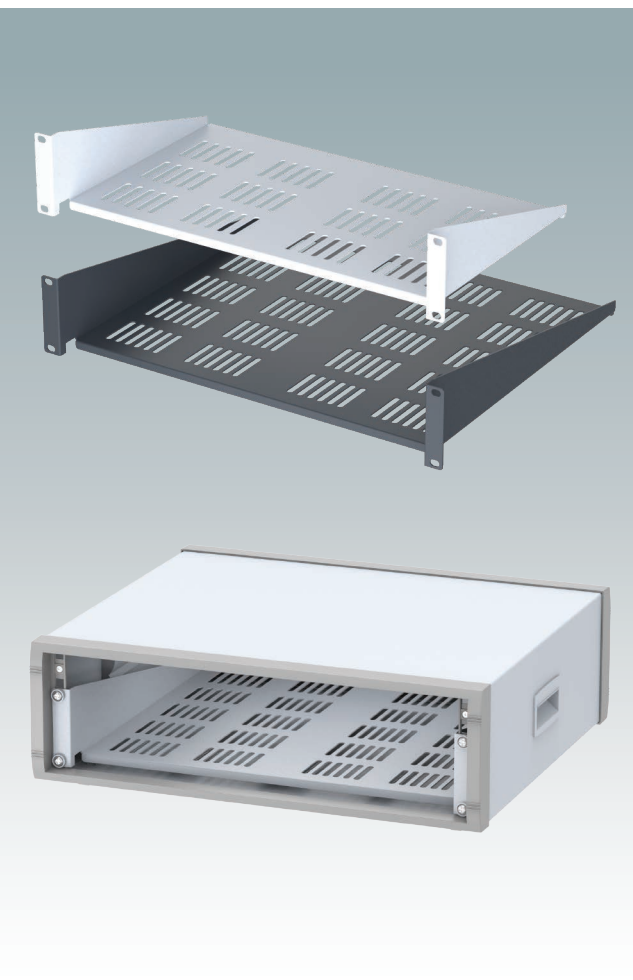


## 10.5"/19" Front Panels

### Supply:

1 panel (3 mm matt anodised aluminium)

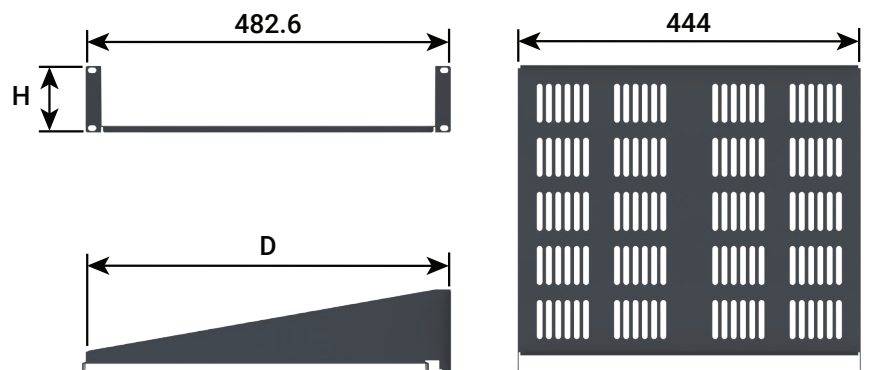
Part No.	Version	H	Ventilated
M 60 10 001	10.5"	3U	
M 60 19 010	19"	1U	
M 60 19 011	19"	1U	●
M 60 19 020	19"	2U	
M 60 19 001	19"	3U	



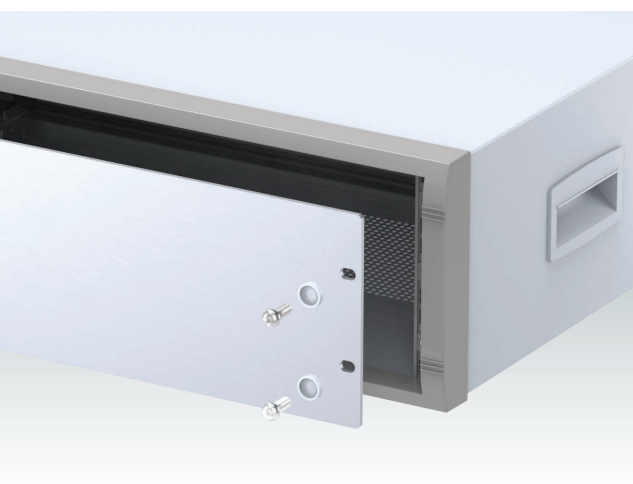
## 19" Cantilever Rack Shelves

**Material:** Mild steel CR4

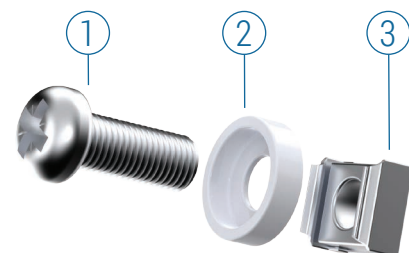
**Supply:** 1 shelf



Part No.	H	D	Colour
M 61 19 265	2U	280	○ RAL 7035
M 61 19 264	2U	280	● RAL 7016
M 61 19 285	2U	400	○ RAL 7035
M 61 19 284	2U	400	● RAL 7016



## 19" Mounting Kit



Part No.	Supply	Colour
M 60 00 035	①+②+③ x 4	○ RAL 7035 ②
M 59 00 016	①+②+③ x 4	● RAL 9005 ②
M 59 00 018	①+②+③ x 4	● RAL 9005 ① ②



# INSTRUMET 19" | CUSTOMISED VERSIONS



## Order your own customised version

We can supply the INSTRUMET 19"/10.5" enclosures fully customised to your individual technical specifications.

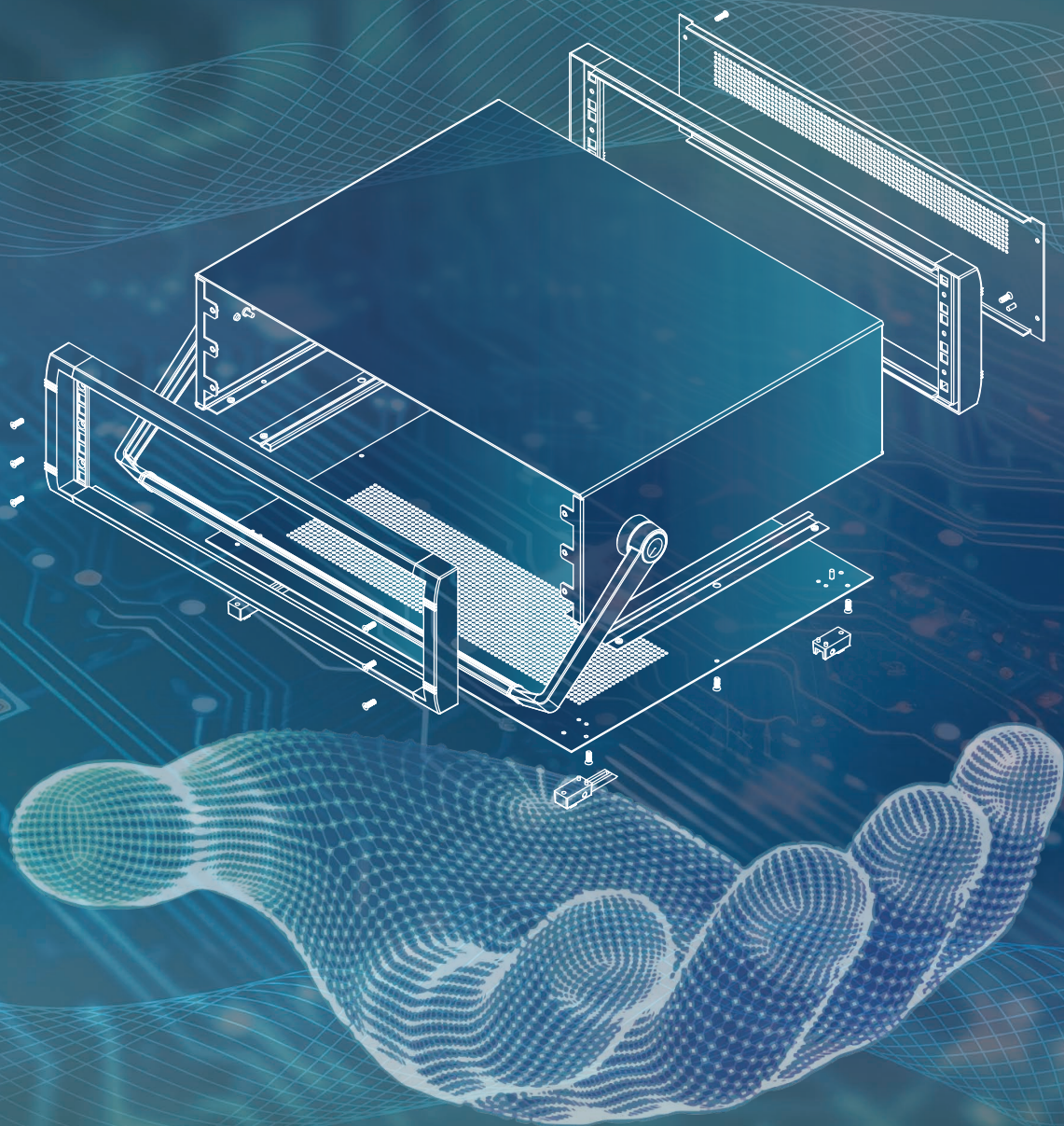
The external depth dimension can be modified to ensure your assemblies and equipment will fit exactly.

The enclosures and front panels can be machined with holes and cutouts for fitting displays, keypads, HMI touch panels, control buttons and connections.

Other services include adding inserts and screw bosses; custom colours and finishes; digital and silk-screen printing, and engraving.

Having a flexible manufacturing system allows us to offer competitive prices even for small quantities. Do not hesitate to ask us for a quotation.

Our sales team will be very happy to discuss your requirements and help you specify your INSTRUMET 19"/10.5" enclosures exactly as you need them.



# METcase™

## MANUFACTURER

Metcase Enclosures  
A division of:  
OKW Enclosures Ltd.  
15 Brunel Way  
Segensworth East  
Fareham, Hampshire  
PO15 5TX  
United Kingdom

Telephone: +44 (0) 1489 583858  
Email: [sales@metcase.co.uk](mailto:sales@metcase.co.uk)  
Website: [www.metcase.co.uk](http://www.metcase.co.uk)

© OKW Enclosures Ltd. All rights reserved  
Catalogue Edition 1.1 – July 2025.  
This catalogue will be valid until 31/12/2027.  
Subject to technical modifications without notice.  
Typographical and other errors do not justify any  
claim for damages.  
Digital Version: 07/2025e

## Presented by:

Find your local sales partner here:



**UNITED KINGDOM | IRELAND**  
OKW ENCLOSURES LTD  
15 Brunel Way,  
Segensworth East,  
Fareham, PO15 5TX  
United Kingdom  
Phone: +44 (0) 1489 583858  
Email: [sales@metcase.co.uk](mailto:sales@metcase.co.uk)  
Website: [www.metcase.co.uk](http://www.metcase.co.uk)



**AUSTRALIA | NEW ZEALAND**  
ROLEC OKW Australia New Zealand PTY LTD  
Unit 6/29 Coombes Drive, Penrith NSW 2750  
Phone: +61 2 4722 3388  
Email: [metcase@rolec-okw.com.au](mailto:metcase@rolec-okw.com.au)  
Website: [www.metcase.com.au](http://www.metcase.com.au)



**BELGIUM | LUXEMBOURG**  
Telerex nv  
Uilenbaan 90,  
2160 WOMMELGEM, België  
Tel: +32 3 326 40 00  
Email: [sales-be@telerex-europe.com](mailto:sales-be@telerex-europe.com)  
Website: [www.metcase.co.uk](http://www.metcase.co.uk)



**BRAZIL**  
sob Schurter + OKW do Brasil  
Componentes Eletrônicos Ltda.  
Rua Barão do Triunfo,  
88 - Sala 606 Brooklin,  
São Paulo/SP CEP 04602-000  
Phone: +55 (11) 50 90 00 30  
Email: [info@sob-brasil.com](mailto:info@sob-brasil.com)  
Website: [www.metcase.co.uk](http://www.metcase.co.uk)



**POLAND**  
LC ELEKTRONIK Sp. z o.o. Sp. k.  
UL. PULKOWA 58,  
01-969 Warszawa  
Phone: +48 (22) 569 53 00  
Email: [lcel@lcel.com.pl](mailto:lcel@lcel.com.pl)  
Website: [www.metcase.co.uk](http://www.metcase.co.uk)



**ISRAEL**  
P. Weiss  
20 Ha-Ta'as st.  
P.O.B. 50 Kfar-Saba, 4442520.  
Phone: +972 9 7677500  
Email: [pweiss@pweiss.co.il](mailto:pweiss@pweiss.co.il)  
Website: [www.metcase.co.uk](http://www.metcase.co.uk)



**NETHERLANDS**  
Telerex Nederland B.V.  
Minervum 7139, 4817 ZN BREDA  
Tel: +31 76 578 20 00  
Email: [sales-nl@telerex-europe.com](mailto:sales-nl@telerex-europe.com)  
Website: [www.metcase.co.uk](http://www.metcase.co.uk)



**ITALY**  
Alhof di A. Hofmann SPA  
Via Melegnano 20,  
20019 Settimo Milanese MI  
Phone: +39 (02) 28 50 08 1  
Email: [alhof@alhof.com](mailto:alhof@alhof.com)  
Website: [www.metcase.co.uk](http://www.metcase.co.uk)

[www.metcase.co.uk](http://www.metcase.co.uk)