

Unimet Desktop Enclosures

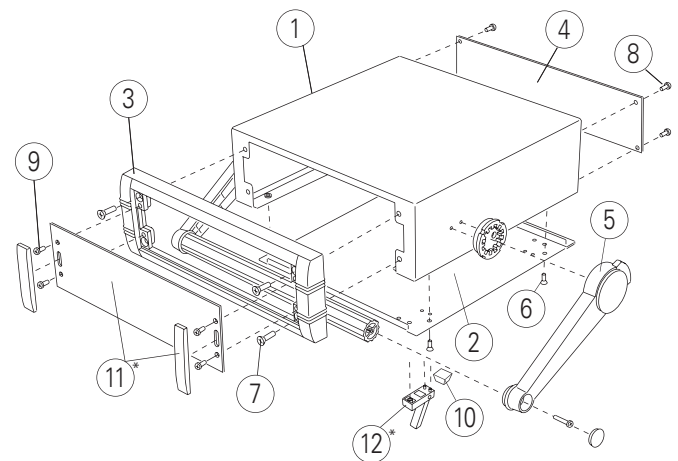
Modern desktop and portable instrument enclosures. Robust and versatile aluminium design in six sizes. With or without a tilt/swivel carry handle. Die cast front bezel is assembled to the folded aluminium case body. Removable rear panel. Mounting holes in base for PCBs, chassis etc. Four non-slip rubber feet included. Order your own fully customised version.

Unimet Tischgehäuse

Moderne Instrumentengehäuse für tragbare oder für Tisch-Anwendungen. Robustes und vielseitiges Design in sechs Größen. Mit oder ohne Aufstell-/Tragebügel. Der Druckguss-Frontrahmen ist am Gehäusekorpus aus abkantetem Aluminium montiert. Abnehmbare Rückwand. Montagelöcher im Boden für Leiterkarten, Chassis usw. Vier rutschfeste GummifüÙe im Lieferumfang enthalten. Bestellen Sie Ihre eigene kundenspezifische Version.

Boitiers de table Unimet

Boitiers pour instruments modernes de table et portables. Design robuste et polyvalent en six tailles. Avec ou sans poignée étrier basculable/pivotante. Cadre frontal moulé sous pression fixé au corps de boîtier en aluminium plié. Plaque arrière amovible. Trous de montage dans la plaque inférieure pour cartes, châssis, etc. Quatre pieds en caoutchouc antiglisse compris. Commandez votre version entièrement personnalisée.



Supply

- ① Top cover
- ② Base panel
- ③ Front bezel
- ④ Rear panel
- ⑤ Carry handle
- ⑥ M3 x 8 mm (x4)
- ⑦ M4 x 16 mm (x2/4)
- ⑧ M3 x 8 mm (x4)
- ⑨ M3 x 8 mm (x4)
- ⑩ Rubber foot (x4)
- ⑪ *Front panel kit
- ⑫ *ABS feet

*Accessories

Lieferumfang

- Deckplatte
- Bodenplatte
- Frontrahmen
- Rückplatte
- Griffbügel
- M3 x 8 mm (x4)
- M4 x 16 mm (x2/4)
- M3 x 8 mm (x4)
- M3 x 8 mm (x4)
- GummifuÙ (x 4)
- *Frontplatten-Set
- *GehäusefüÙe (ABS)

*Zubehör

Fourniture

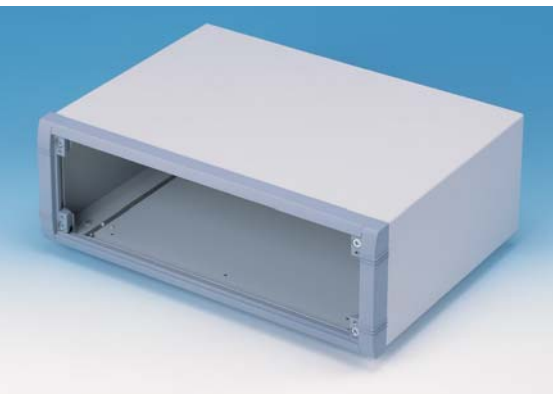
- Partie supérieure
- Plaque inférieure
- Cadre frontal
- Plaque arrière
- Poignée étrier
- M3 x 8 mm (x4)
- M4 x 16 mm (x2/4)
- M3 x 8 mm (x4)
- M3 x 8 mm (x4)
- Pied de boîtier (x4)
- *Kit de plaque avant
- *Pieds du boîtier (ABS)

*Accessoires

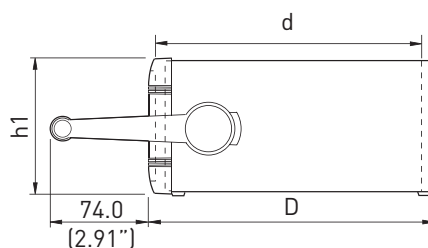
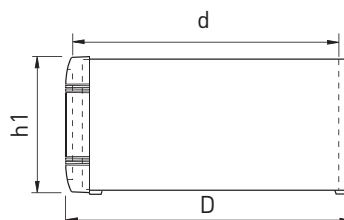
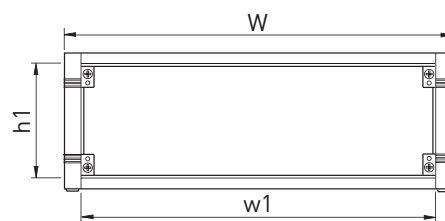


Standard colours
Standardfarben
Coloris standard

Unimet



Version H



Without Carry Handle/Bail Arm Ohne Griffbügel / Sans poignée étrier

Part No. Bestell-Nr./Réf.	Version	H	W	D	d	w1 Front Panel Frontplatte Plaque avant	h1 Front Panel Frontplatte Plaque avant	PCB Leiterplatte Width (max.) Breite/largeur	PCB Leiterplatte Depth (max.) Tiefe/profondeur
M 56 23 005	1	50 (1.96")	230 (9.05")	190 (7.48")	171.8 (6.76")	199.5 (7.85")	33.6 (1.32")	175 (6.88")	161 (6.33")
M 56 23 105	2	85 (3.34")	230 (9.05")	190 (7.48")	171.8 (6.76")	199.5 (7.85")	65.1 (2.56")	175 (6.88")	161 (6.33")
M 56 25 105	3	85 (3.34")	250 (9.84")	260 (10.23")	242.2 (9.53")	219.5 (8.64")	65.1 (2.56")	195 (7.67")	231 (9.09")
M 56 35 205	4	120 (4.72")	350 (13.77")	260 (10.23")	242.2 (9.53")	319.5 (12.58")	100.1 (3.94")	295 (11.61")	231 (9.09")
M 56 25 305	5	150 (5.90")	250 (9.84")	260 (10.23")	242.2 (9.53")	219.5 (8.64")	130.1 (5.12")	195 (7.67")	231 (9.09")
M 56 35 305	6	150 (5.90")	350 (13.77")	260 (10.23")	242.2 (9.53")	319.5 (12.58")	130.1 (5.12")	295 (11.61")	231 (9.09")

With Carry Handle/Bail Arm Mit Griffbügel / Avec poignée étrier

Part No. Bestell-Nr./Réf.	Version	H	W	D	d	w1 Front Panel Frontplatte Plaque avant	h1 Front Panel Frontplatte Plaque avant	PCB Leiterplatte Width (max.) Breite/largeur	PCB Leiterplatte Depth (max.) Tiefe/profondeur
M 56 23 025	1H	50 (1.96")	230 (9.05")	190 (7.48")	171.8 (6.76")	199.5 (7.85")	33.6 (1.32")	175 (6.88")	161 (6.33")
M 56 23 125	2H	85 (3.34")	230 (9.05")	190 (7.48")	171.8 (6.76")	199.5 (7.85")	65.1 (2.56")	175 (6.88")	161 (6.33")
M 56 25 125	3H	85 (3.34")	250 (9.84")	260 (10.23")	242.2 (9.53")	219.5 (8.64")	65.1 (2.56")	195 (7.67")	231 (9.09")
M 56 35 225	4H	120 (4.72")	350 (13.77")	260 (10.23")	242.2 (9.53")	319.5 (12.58")	100.1 (3.94")	295 (11.61")	231 (9.09")
M 56 25 325	5H	150 (5.90")	250 (9.84")	260 (10.23")	242.2 (9.53")	219.5 (8.64")	130.1 (5.12")	195 (7.67")	231 (9.09")
M 56 35 325	6H	150 (5.90")	350 (13.77")	260 (10.23")	242.2 (9.53")	319.5 (12.58")	130.1 (5.12")	295 (11.61")	231 (9.09")

For front panels and accessories see page 15.

Für Frontplatten und Zubehör siehe Seite 15.

Pour plaques avant et accessoires voir page 15.

Front Panel Kit

Frontplatten-Set
Kit de plaque avant

Supply:

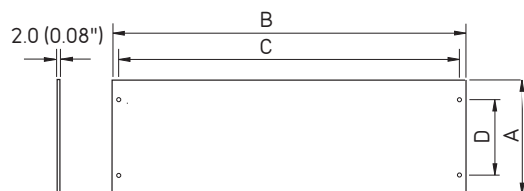
Panel (matt anodised aluminium)
2 Trims (ABS, RAL 7040)

Lieferumfang:

1 Platte (Al, matt eloxiert)
2 Abdeckstreifen (ABS, RAL 7040)

Fourniture:

1 plaque (Al, anodise mat)
2 bandes d'obturation (ABS, RAL 7040)

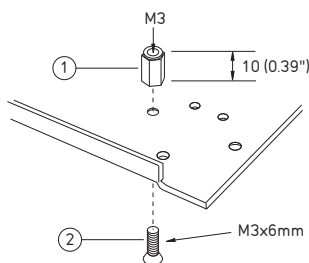


Part No. Bestell-Nr./Réf.	Version	A	B	C	D
M 57 00 607	1/1H	33.6 (1.32")	199.5 (7.85")	188 (7.40")	22.1 (0.87")
M 57 00 608	2/2H	65.1 (2.56")	199.5 (7.85")	188 (7.40")	30.8 (1.21")
M 57 00 613	3/3H	65.1 (2.56")	219.5 (8.64")	208 (8.18")	30.8 (1.21")
M 57 00 620	4/4H	100.1 (3.94")	319.5 (12.57")	308 (12.12")	65.8 (2.59")
M 57 00 616	5/5H	130.1 (5.12")	219.5 (8.64")	208 (8.18")	95.8 (3.77")
M 57 00 621	6/6H	130.1 (5.12")	319.5 (12.57")	308 (12.12")	95.8 (3.77")

PCB Mounting Kit

Leiterkarten Montage-Set
Jeu pour montage des circuits imprimés

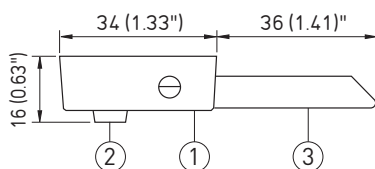
Only for Unimet
Nur für Unimet
Uniquement pour Unimet



Part No. Bestell-Nr./Réf.	Article Artikel
M 56 00 001	① + ② x 10

ABS Feet

Gehäusefüße (ABS)
Pieds du boîtier (ABS)

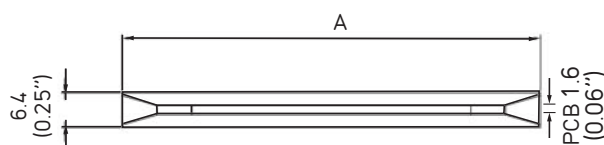


Part No. Bestell-Nr./Réf.	Article Artikel
M 56 00 015	① + ② x 4
M 56 00 045	① + ② x 4 + ③ x 2

PCB Guides

Kartenführungen
Guides-cartes

Only for Unimet-Plus
Nur für Unimet-Plus
Uniquement pour Unimet-Plus



Part No. Bestell-Nr./Réf.	A	Unimet-Plus version
M 57 00 203	102 (4.00")	1/1H/2/2H
M 57 00 202	216 (8.50")	3/3H/4/4H/5/5H/6/6H